

A Newsletter for the Iowa Chapter of the American Society of Heating, Refrigerating, and Air Conditioning Engineers

ASHRAE Iowa Chapter
www.ashraeiowa.org

Board of Governors

- [Luke Clausen](#)
- [Emir Kadic](#)
- [Susan Oltrogge](#)
- [Dan Zaug](#)

Officers

- President
[Roger Leshner](#)
- President Elect
[Holly Elbert](#)
- Treasurer
[Kelly Crow](#)
- Secretary
[Matt Jesson](#)

Committee Chairs

- Attendance/Reception
[Fred Miller](#)
- Auditing
[Susan Oltrogge](#)
- CTTC
[Jacob Newman](#)
[Tim Grossman](#)
- e-Committee
[Andrew Pospisal](#)
[Jason Kems](#)
- Historian
[Kit Cartwright](#)
- Honors & Awards
[Jerrod Sieverding](#)
- Membership
[Jake Cunliffe](#)
- Refrigeration
[Justin Barrett](#)
- Resource Promotion
[Tim Conrad](#)
- Student Activities
[Holly Stevens](#)
[Tim Shimerdla](#)

THIS MONTH AT ASHRAE Fall Frolic Golf Outing



Mark Allen tees off at Legacy.

On September 2nd, about 100 ASHRAE members and guests stormed the links at Legacy Golf Course. It was a beautiful day, and our golfers made the best of it. The day even included a hole-in-one, rumored to be the first in the storied history of Iowa Chapter outings.

Winners' Circle

1st Place Team

- Dennis Hogan
- Tom Wengert
- John Sarcone
- John Thyberg

2nd Place Team

- Kevin Hart
- Ben Herr
- Jeff Hammer
- Greg Knudson

3rd Place Team

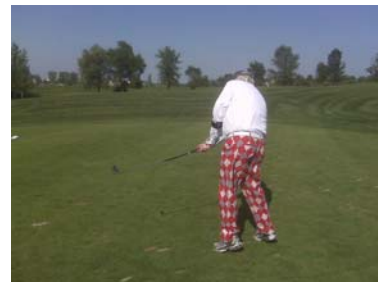
- Jim Lee
- Mike Petersen
- Rich Holbrook
- Brenden Hannah

Last Place Team

- Kit Cartwright
- Roger Leshner
- Corey Metzger
- Fmir Kadic

<u>Pin Event</u>	<u>Hole</u>	<u>Winner</u>
Longest Putt	1	Craig Parsons
Longest Drive	4	Jon Thyberg
Closest to the Pin	5	Holly Stevens
Longest Drive	11	Tom Wengert
Longest Putt	13	Bruce Simonsen
Closest to the Pin	17	Gerry Gelhaar

A special thank-you to Jason Kems and Jeff Hammer for organizing the golf outing!



Dennis Hogan can be reached at 223-6568 for fashion advice.

Newsletter Sponsors

If you have had a sponsorship for last year's newsletter and would like to continue the ad please send a check to ASHRAE Iowa Chapter Newsletter Sponsorship:

PO Box 3686
 Urbandale, IA 50323

Make Check Payable to: ASHRAE Iowa

Cost is \$125.

Payments need to be received immediately for inclusion in the next issue of Iowa Stalks.

PAST PRESIDENTS

- Kit Cartwright 2008-2009
- Jerrold Sieverding 2007-2008
- Jason Kems 2006-2007
- Chuck Heldenbrand 2005-2006
- Jeff Gross 2004-2005
- Ron Engelhardt 2003-2004
- Dan Zaug 2002-2003
- Susan Oltrogge 2001-2002
- Christopher Nelson 2000-2001
- Donald Swanson 1999-2000
- Edward Truslow 1998-1999
- James Hall 1997-1998
- Robbin Vannoy 1996-1997
- Mark Conway 1995-1996
- Paul Melton 1994-1995
- Gregory Maxwell 1993-1994
- Jeffery Hammer 1992-1993
- Jack Culp 1991-1992
- James Lee 1990-1991
- Clint Leonard 1989-1990
- Charles Pedersen 1988-1989
- Gary Reynolds 1987-1988
- Dennis Hogan 1986-1987
- Eugene Zefron 1985-1986
- Donald Hagge 1984-1985
- Robert Rist 1983-1984
- Joseph Proctor 1982-1983
- Mark Allen 1981-1982
- Curtis Klaassen 1980-1981
- Gerald Anderson 1979-1980
- C.W. Miller 1978-1979
- Richard South 1977-1978
- Verne Stewart 1976-1977
- Curtis Hammer 1975-1976
- Ralph Schilling 1974-1975
- Donald Bonicamp 1973-1974
- Kent Mosher 1972-1973
- Thomas Van Hon 1971-1972
- Robert McBride 1970-1971
- William Whitman 1969-1970
- Einar Dahl 1968-1969
- Eugene O'Neil 1967-1968
- James Green 1966-1967
- Neil Hanson 1965-1966
- Bob Flanagan 1964-1965
- Lyndon Kelley 1963-1964
- Elwood Giberson 1962-1963
- Vern Polly 1961-1962
- John Bain 1960-1961
- Crom Campbell 1959-1960
- R.T. Howard 1958-1959
- W.A Schworm 1957-1958
- D.E. Schroeder 1956-1957
- G.J. Kraai 1955-1956
- W.E. Nanes 1954-1955
- J.F. Sandfort 1953-1954
- R.H. Schnell 1952-1953
- C.H. McGuiness 1951-1952
- R.S. Stover 1950-1951
- D.E. Wells 1949-1950
- D.C. Murphy 1948-1949
- C.A. Wheeler 1947-1948
- E.O. Olson 1946-1947
- B.E. Landes 1945-1946
- W.W. Stuart 1944-1945
- C.W. Helstrom 1943-1944
- P.E. Triggs 1942-1943
- Perry LaRue 1941-1942
- R.A. Norman 1940-1941
- Tracy Johnson 1939-1940
- W.R. White 1938-1939

President's Corner



Hello Everybody. I hope you had a nice summer and you enjoyed the fall golf outing (I did ... a bit too much) at Legacy on such a wonderful day. What a great way to start out the year. The Board of Governors is working on some exciting technical presentations. We are planning a visit from a distinguished lecturer and we will continue to follow the two free drink tickets for anyone who pre-registers for the meeting, oh, and of course the Iowa chapter will continue to pay for your meal. Since your food and drinks are all taken care of let's have some large crowds!!!

This year we're hoping to expand the horizon of our local chapter a bit. The Board of Governors is looking for a way to provide some local workshops in energy efficiency and energy conservation measures. If anyone has a suggestion on a good format for this, let me know.

Beyond training within our community, we plan on reaching out too. The Board of Governors is also looking to webcast some of our technical sessions to some other ASHRAE Chapters in our region. The interconnectivity of today's society is just awesome.

Thank you again if you were able to participate in making the golf outing a success. We'll talk again next month.

- Roger Lesher, P.E.

UPCOMING CHAPTER MEETINGS

October 20th
Membership Night
(see following page)

November 16th
Resource Promotion

December 21st
Past Presidents/History

January 18th
Resource Promotion

February 15th
Membership/Student Night

March 15th
Refrigeration

April
ASHRAE Online Broadcast

May
Spring Fling Golf Outing

Dates subject to change!

Mark Your Calendars

**ASHRAE
2010 WINTER CONFERENCE**

JANUARY 23-27

ORLANDO, FL

**REGION VI
2010 CRC**

MAY 13-15

MILWAUKEE, WI

We're on the Web!

See us at:
www.ashraeiowa.org

DID YOU KNOW?

Your chapter dues include the cost of meals at our meetings, so you no longer have to pay at the door.

Get the most out of your dues by attending the monthly meetings!

In other news...

[2012 Olympic Venues To Use Natural Refrigerants](#)

[ASHRAE Design Competition Gives Students Hands-On Experience in Practical Design](#)

[EPA Challenges American School Districts to Save Energy](#)

Closer to home

[\\$1 Million to Fund Green Building Workshops in Iowa](#)

October's Meeting Preview

BIDDING GREEN BUILDING PROJECTS

Dr. Thomas E. Glavinich

Date: October 20, 2009 (time TBA)
 Location: Local 45 Training Center

SEMINAR OVERVIEW

HVAC systems and their operation are a critical component of high-performance or green buildings from both an energy and indoor air quality standpoint. The HVAC contractor plays an important role in the success of any green building project. This seminar will provide an overview of green building projects and their potential impact on the HVAC contractor's field productivity and project overhead. Factors discussed in this seminar need to be addressed in the HVAC contractor's bid or proposal in order to ensure that the project is completed on time and within budget. Topics covered in this seminar include:

- Overview of green building rating systems—Code/1 hour
 - High performance HVAC technical system requirements per (USGBC) (LEED)
 - ASHRAE/IESNA Standard 90.1: Energy standards for buildings
 - ICC's International Energy Conservation Code
- Identifying and accounting for green subcontract requirements.
- Green building project subcontracting and procurement considerations.
- HVAC material and equipment procurement, delivery, and protection.
- Maintaining indoor air quality (IAQ) during construction.
- Using low-emitting adhesives, sealants, paints, and coatings.
- Addressing construction waste management requirements.
- Accounting for pre-occupancy flush out or air testing requirements.
- HVAC commissioning requirements and procedures—Code/30 minutes
 - High performance HVAC technical system requirements per (USGBC) (LEED)
 - ASHRAE/IESNA Standard 90.1: Energy standards for buildings
 - ICC's International Energy Conservation Code
- Green building closeout requirements and procedures—Code/30 minutes
 - High performance HVAC technical system requirements per (USGBC) (LEED)
 - ASHRAE/IESNA Standard 90.1: Energy standards for buildings
 - ICC's International Energy Conservation Code
- Need for knowledgeable office and field personnel.

SEMINAR LEADER

Dr. Thomas E. Glavinich is an Associate Professor of Civil, Environmental and Architectural Engineering at the University of Kansas (KU). At KU, Tom teaches undergraduate and graduate courses in construction engineering and management.

MEMBERSHIP CORNER

Please remember to go to the ASHRAE website and update for bio information and check to see if you are eligible for a membership upgrade.

Just sign on to www.ashrae.org and click "update bio" on the left side of the screen.

Updating your bio will help ensure you keeping getting the newsletter and updates from the chapter.

LEED v3

Over the past few months, the [U.S. Green Building Council \(USGBC\)](#) has been rolling out some significant changes to the popular Leadership in Energy and Environmental Design (LEED) program. Here are some of the changes:

- [LEED 2009](#), an updated version of the rating system, including different credit weightings, new reference standards, and regionalization
- [LEED Online](#) upgrades
- Expanded certification infrastructure, based on ISO standards, administered by the [Green Building Certification Institute \(GBCI\)](#)
- New requirements for individual accreditation – read the [LEED AP FAQs](#).

By the way...

[USGBC Iowa Chapter](#) meeting
September 16th, 12:00pm
Des Moines Botanical Center, 909 Robert D. Ray Drive, Des Moines

PROGRAM: **LEED v3, What's an AP to do?**
Understanding the credentialing requirements and process.

Follow the link above for more information.

ASHRAE Provides Opportunity for Continuing Education

ATLANTA – In keeping with ASHRAE's goal of continuing education, the Society will once again offer fall online seminars.

These online, instructor-led seminars will run from late September through early November and are available to those interested in expanding their knowledge of the HVAC industry and keeping up to date with the latest technology and their applications. Many popular courses will be offered, several of which will include updated material. The courses will cover a broad range of topics, including:

- *Understanding & Designing Dedicated Outdoor Air Systems (DOAS)*
- *The Commissioning Process & Guideline 0*
- *Complying with Standard 90.1-2007 HVAC/Mechanical*
- *Introduction to Green Buildings and Sustainable Construction*
- *Complying with Standard 90.1-2007 Envelope/Lighting*
- *The Basics of Radiant Panel Heating & Cooling**
- *Using Standard 90.1-2007 to Meet LEED Requirements*
- *Chilled Beam Technology for Excellent Indoor Climate in an Energy Efficient Manner*

- *Complying with Requirements of ASHRAE Standard 62.1-2007*
- *Energy Management in Existing Buildings**
- *Humidity Controls: Basic Principles Loads & Equipment*
- *Humidity Controls: Application, Control Levels & Mold Avoidance*
- *The Basics of a Proposed Standard on High Performance Green Buildings (Standard 189.1)*

**Indicates updated course material.*

The three-hour-long courses are taught in real-time, from 1 p.m. to 4 p.m. EDT, and feature interactive audio. Either three professional development hours or American Institute of Architects learning units or 0.3 continuing education units are available for each course.

Those who sign up for courses before Sept. 11 will receive a reduced registration fee. A 20 percent discount is also available to participants who register for courses with related topics.

A full list of courses and registration information can be found at www.ashrae.org/onlinecourses.



This is your brain.



This is your brain on ASHRAE's continuing education.

Any questions?

USGBC Tackles Building Performance Head On

WASHINGTON, DC Aug 25, 2009 – The U.S. Green Building Council today stepped up its commitment to improved building performance with the launch of the Building Performance Initiative, designed to put in place a comprehensive data collection effort from all buildings that have achieved LEED certification; implement an appropriate analysis methodology of that data; and provide feedback to building owners so they have better information with which to address any performance gaps that stem from predicted building performance versus actual performance.

This initiative complements the announcement earlier this year that will require ongoing performance data from buildings as part of their certification under the latest version of LEED and beyond.

“This initiative is about gathering knowledge about building performance in a way no one has ever done before,” said USGBC LEED Senior Vice President, Scot Horst. “The information that we collect from our certified projects is a workable,

holistic approach for achieving better performing buildings.”

Horst noted that the LEED green building program was created to transform the way buildings traditionally have been designed and constructed with the goal of reducing the building’s impact on the environment by being more energy, water and resource efficient, but a building’s day-to-day operation has a dramatic impact on its performance. Without better information, an owner or facility manager won’t know where the gaps are and be able to act on them.

Numerous things affect the ability of a building to deliver high performance, including energy modeling tools, properly timed energy models, quality building commissioning, proper goal setting / benchmarking, and coordination between design and operation. The biggest issue by far is how the people use the building day to day: Do they forget to turn out the lights when they leave the room? Leave the water running in the sink? Do the facility managers have protocols for checking automatic controls?

Do they know when those controls are malfunctioning?



“Plenty of people are content to simply point to these longstanding issues without offering a constructive way to address them. We’re going to take them on and engage practitioners and thought leaders alike in establishing a national roadmap to optimize building performance,” continued Horst.

That engagement mechanism is four Building Performance Initiative summits to be held across the U.S. this September and October. Participants will have a chance to preview USGBC’s data collection agenda and proposed analysis methodology and provide other feedback.

“The local summits are a way to gather people’s input for our vision and also for them to share their performance stories, successes and challenges,” said Horst.

The inputs from these meetings will be reported on at the First Annual Building Performance Summit at Greenbuild, Nov. 11-13, 2009 in Phoenix. An important part of the Building Performance Initiative includes collecting data from thousands of LEED-certified project; USGBC will be working with highly experienced real estate research organizations, including Kingsley and Associates, in this effort.

“Establishing the importance of the connection between the landlord and tenant; the designer and operator; and the owner and the occupant will be one outcome of this initiative,” said Horst. “Everyone has a contribution to make to how the building ultimately performs. With the right kind of information, it will be much easier to see what areas are really driving performance and what areas need to be addressed. The Building Performance Initiative is a great step in that direction.”

For more information, visit <http://www.usgbc.org>.

ASHRAE 2008-2009 RESEARCH PROMOTION FUND

ASHRAE Research Investors 2009-10		
Individual Investors		Company Investors
HR = Honor Roll participants \$100 min		HR = Honor Roll participants \$150 min
	\$13,500 _____	
	\$13,000 _____	
	\$12,500 _____	
	\$12,000 _____	
	\$11,500 _____	
	\$11,000 _____	
	\$10,500 _____	
	\$10,000 _____	
	\$9,500 _____	
	\$9,000 _____	
	\$8,500 _____	
	\$8,000 _____	
	\$7,500 _____	
	\$7,000 _____	
	\$6,500 _____	
	\$6,000 _____	
	\$5,500 _____	
	\$5,000 _____	
	\$4,500 _____	
	\$4,000 _____	
	\$3,500 _____	
	\$3,000 _____	
	\$2,500 _____	
	\$2,000 _____	
	\$1,500 _____	
	\$1,000 _____	
	\$500 _____	
	\$0 _____	

Donations may also be contributed via the Internet at www.ashrae.org

under the

"Contribute

Online" quick link.

Updated: 09/01/2009

Your contribution puts us closer to achieving our goal. Please send what you can today!

COMPLETE THE INFORMATION BELOW AND RETURN IT WITH YOUR INVESTMENT

Please accept my research investment in the amount of \$ _____ CK# _____

NAME _____ PHONE _____

COMPANY _____ FAX _____

ADDRESS _____

CITY _____ STATE _____ ZIP _____

PLEASE CHECK ONLY ONE: () Personal Contribution () Company Contribution

Charge my gift to: () VISA () MC () AE

Credit Card #: _____ Exp.date: _____

Signature: _____

ASHRAE is a 501(c)(3) organization. Contributions are deductible as allowed by law. A receipt will be sent to the address listed above.

Send to:
 ASHRAE RESEARCH PROMOTION
 C/O Tim Conrad Johnson Controls
 11318 Aurora Ave.
 Des Moines, IA 50322
 PHONE: 515-727-6964
 FAX: 515-252-0001

Thank you for your donation!



Ron Engelhardt, PE x230
Quenten Meyer, PE x229
Dave Wisnieski x226
Kit Cartwright x243

Halvorson Trane
 2220 NW 108th St., Clive IA 50325
 TEL 515 270 0004
 FAX 515 270 3835
www.trane.com



Hydronic Energy, Inc.
 3307 104th Street • Des Moines, IA 50322
 website: www.hydronicenergy.com
 e-mail: rick@hydronicenergy.com
 (515) 276-4935 • Fax (515) 276-1017
 cell: (515) 250-7120
RICK KAPUSTKA



MMS
 MIDWEST MECHANICAL SOLUTIONS

Patrick Peterson
 Sales Engineer

direct: (952) 525-2035 5831 Cedar Lake Road
 cell: (612) 801-0814 Minneapolis, MN 55416
 fax: (952) 738-5226

patrick.peterson@mmstwincities.com www.mmstwincities.com

FELD-HAZER & ASSOCIATES, INC.
 MANUFACTURERS REPRESENTATIVES

DALE VEST
 President

5261 NW 114th Street, Suite F • Grimes, IA 50111
 PHONE 515/986-3671 • FAX 515/986-3564
 CELL 515/210-7249 • 800/647-5717
dvest@feldhazer.com

DON STANEK



1454 30th Street, Suite #207 (515) 223-6048
 West Des Moines, IA 50266-1312 (515) 223-7269 (Fax)
dstanek@milltechhvac.com (515) 238-7077 (Cell)

INNOVATIVE HVAC SOLUTIONS



**SYSTEMS
 MANAGEMENT &
 BALANCING, INC.**



- HVAC System Test and Balance - Air & Water Balancing -
 HVAC System Commissioning

925 S.E. Olson Drive Phone 515-987-2825
 Waukee, IA 50263 Fax 515-987-5036

James E. Hall, P.E.
jimh@hvactab.com www.hvactab.com



RAY COSGROVE
 Sales Solutions Representative

758 Schmidt Road
 Davenport, IA 52802
 Office: (563) 322-7744
 Fax: (563) 322-5818
 Toll Free: (800) 798-4178
 E-M: rcosgrove@affiliatedsteam.com
 EDI #: 054332358
 Internet: www.affiliatedsteam.com



HART - HAMMER, INC.

Phone (515) 277-6305
 Fax (515) 277-3069
 529 Elm St • PO Box 65517
 West Des Moines, IA 50265
www.harhammer.com
info@harhammer.com




EXHAUSTO
SMART Halton UV Resources

ASHRAE Iowa wishes to thank all of our newsletter sponsors!