

[View this email in your browser](#)



Iowa Stalks Monthly Newsletter - September 2019

This Month at ASHRAE Iowa

Ethics Training in October

Date: Wednesday, October 23rd at Hyperion in Johnston

Tentative Schedule:

4:30-5:00 Registration and Check In

5:00-6:00 Social/Networking

6:00 to 6:30 Dinner

6:00 to 6:15 ASHRAE Updates

6:15 to 8:15 Presentation

8:15 to 8:30 Additional Social/Networking

Professional Ethics for Licensed Engineers

To ensure the public's safety, the Iowa Code defines the importance and expectation of ethical behavior for licensed engineers and land surveyors. Attend this interactive presentation to learn about behaving ethically and professionally in a business context, the principles behind ethical decision making and putting ethics into practice as a licensed engineer. This two-hour presentation will satisfy the State of Iowa's PDH Professional Ethics requirement. Rita Perea will be giving the presentation.

About Rita Perea

Rita Perea is an international speaker, best-selling author, executive coach, and talent development trainer. She is preparing to celebrate her 20th year as Founder and CEO of Rita Perea Leadership Consulting, Inc.

An experienced executive herself, she has helped business owners, leaders and professionals of all types reach their next level of success and become the highest version of their best selves so that they—and their teams—can thrive in the workplace. Her Iowa-based corporate clients have included Shive-Hattery Architecture + Engineering, Principal Financial Global Investors, Nationwide Insurance, Kemin International, and Meredith Publishing Corporation. Rita's online Professional Ethics for Engineers and Land Surveyors PDH courses can be found at the [SuccessAcademy.online](http://www.SuccessAcademy.online)

Rita can be reached at www.RitaPerea.com

The 2019 Product Directory

Thank you to all sales representatives for advertising. The directory is available in PDF format on our website - <http://www.ashraeiowa.org/wp-content/uploads/2019/02/2019-Product-Directory.pdf>

If there are any questions, or you did not receive your directory please contact Holly Elbert at helbert@bbsae.com

President's Corner

Welcome Iowa Chapter to a new ASHRAE year!

We kicked things off at TCI in August with our annual Fall Frolic. Our golf committee planned and executed another successful outing. Thank you to all of our golfers, sponsors, and volunteers for making this event possible. Because of the Fall Frolic, we were able to contribute nearly \$4,000 towards our Research Promotion (RP) campaign.

Our next meeting will take place on October 23rd at Hyperion Field Club in Johnston. We are very excited to have Rita Perea join us for her presentation on "Professional Ethics for Licensed Engineers". This two-hour presentation will satisfy the State of Iowa's ethics PDH requirement. Be on the lookout for our registration email in the coming weeks and please consider joining us on October 23rd.

In November we'll host our annual student night in Ames. Details are still being finalized, but plan on dinner followed by a tour of ISU's Student Innovation Center. We will also be awarding several scholarships to some well-deserving students. More details to come!

Our BOG has had a busy summer getting organized and planning another exciting year. Once again we'll be offering excellent technical programs along with some fun social activities. We hope to see you throughout the year. Thanks for supporting your local chapter!

David Poetting (david.m.poetting@jci.com)
Iowa Chapter President 2019-2020

ASHRAE Iowa Chapter

www.ashraeiowa.org

- Board of Governors -

Matt Jesson
Sara Schmerbach
Elli Abel
Terence Schafer

- Officers -

President
David Poetting
President Elect
Adam Puls
Treasurer
Tyson Scheidecker
Secretary
Michael Gustafson

- Committee Chairs -

Attendance
Dan Zaug
Auditing
Joe Moench
CTTC
Peter Erzen
Ted Gerber
eCommittee
Jason Kems
Chris Clausen
Education
Kit Cartwright
Matt Gumm
GAC
Matt Swenka
Historian
Brian Steffens
Honors & Awards
Luke Miller
Membership
Tim Conrad
Product Directory
Holly Elbert
Refrigeration
Justin Barrett
Research Promotion
Tjaden Ahrens
Gary Thompson
Student Activities
Mike Wolfe
Joe Nielsen
TEGA
Dan Ponxs
YEA
Heidi Meyer
AG Oviatt
Golf Outing Committee

Past Presidents

Brian Steffans 2018-2019	Verne Stewart 1976-1977
Luke Miller 2017-2018	Curtis Hammer 1975-1976
Andrew Pospisal 2016-2017	Ralph Schilling 1974-1975
Matt Gumm 2015-2016	Donald Bonicamp 1973-1974
Justin Barrett 2014-2015	Kent Mosher 1972-1973
Tim Conrad 2013-2014	Thomas Van Hon 1971-1972
Matt Jesson 2012-2013	Robert McBride 1970-1971
Kelly Crow 2011-2012	William Whitman 1969-1970
Holly Elbert 2010-2011	Einar Dahl 1968-1969
Roger Leshner 2009-2010	Eugene O'Neil 1967-1968
Kit Cartwright 2008-2009	James Green 1966-1967
Jerrold Sieverding 2007-2008	Neil Hanson 1965-1966
Jason Kems 2006-2007	Bob Flanagan 1964-1965
Chuck Heldenbrand 2005-2006	Lyndon Kelley 1963-1964
Jeff Gross 2004-2005	Elwood Giberson 1962-1963
Ron Engelhardt 2003-2004	Vern Polly 1961-1962
Dan Zaug 2002-2003	John Bain 1960-1961
Susan Oltrogge 2001-2002	Crom Campbell 1959-1960
Christopher Nelson 2000-2001	R.T. Howard 1958-1959
Donald Swanson 1999-2000	W.A. Schworm 1957-1958
Edward Truslow 1998-1999	D.E. Schroeder 1956-1957
James Hall 1997-1998	G.J. Kraai 1955-1956
Robbin Vannoy 1996-1997	W.E. Nanes 1954-1955
Mark Conway 1995-1996	J.F. Sandfort 1953-1954
Paul Melton 1994-1995	R.H. Schnell 1952-1953
Gregory Maxwell 1993-1994	C.H. McGuinness 1951-1952
Jeffery Hammer 1992-1993	R.S. Stover 1950-1951
Jack Culp 1991-1992	D.E. Wells 1949-1950
James Lee 1990-1991	D.C. Murphy 1948-1949
Clint Leonard 1989-1990	C.A. Wheele 1947-1948
Charles Pedersen 1988-1989	E.O. Olson 1946-1947
Gary Reynolds 1987-1988	B.E. Landes 1945-1946
Dennis Hogan 1986-1987	W.W. Stuart 1944-1945
Eugene Zefron 1985-1986	C.W. Helstrom 1943-1944
Donald Hagge 1984-1985	P.E. Triggs 1942-1943
Robert Rist 1983-1984	Perry LaRue 1941-1942
Joseph Proctor 1982-1983	R.A. Norman 1940-1941
Mark Allen 1981-1982	Tracy Johnson 1939-1940
Curtis Klaassen 1980-1981	W.R. White 1938-1939
Gerald Anderson 1979-1980	
C.W. Miller 1978-1979	
Richard South 1977-1978	

Upcoming Meetings

Mark your calendars! The chapter is working hard to put on a great set of events this year and we hope to see you there.

Iowa Chapter Future Meetings

August	27	(TCI)	Fall Frolic Golf Outing
October	23	Hyperion Field Club - Johnston	Ethics / Membership & RP Night
November	19?	Ames	Student Night & Tour
December	16	Holiday Inn (Downtown)	SMCI / CSI Joint Meeting
January	22?	TBD	Building Operators Panel?
February	19?	TBD	Refrigeration Meeting?
March	25?	TBD	Super-tech MP, RP, & History Project
April	TBD	At Your Desk!	ASHRAE Webcast
April	TBD	Val Lanes	Chapter Meeting and Bowling Tournament
May	TBD	Des Moines Golf and Country Club	Spring Fling Golf Outing

Society & Region Events

Month	Date	Location	Topic
February	1-5	Orlando, FL	2020 Winter Conference
May	7-9	Peoria, IL	Region VI CRC
June-July	27-1	Austin, TX	2020 Annual Conference

What's New in the Iowa Chapter?

Iowa Chapter Takes Home Awards at CRC

The Iowa Chapter had three members take home honors at the annual CRC in Milwaukee. Andrew Pospisal won the Gold Ribbon for History Award. Paul Melton received a Chapter Service Award. Justin Barrett received a Chapter Service Award. Please congratulate them if you see them!

In addition, our chapter as a whole received the following awards: Presidential Award of Excellence, Star Award, & Special Citation



ASHRAE Iowa put on it's annual Fall Frolic Golf Outing on Tuesday, August 7th at the Tournament Club of Iowa. We were able to raise nearly \$4,000 towards our Research Promotion campaign! Congratulations to the 1st Place Team:

Ted Gerber

Jake Connor

Tyler Luttenegger

Austin Hennessey



When: **11:00 AM Tuesday August 27, 2019**

Where: Tournament Club of Iowa

1000 Tradition Drive

(See Map on Back)

Polk City, IA 50226

www.tcofiowa.com

515-984-9440



Costs: Golf: \$65.00 for 18 Holes + 1/2 a Cart

Dinner: \$35.00 Dinner (Please make Checks payable to **ASHRAE Iowa Chapter**)

Dinner & Golf: \$100.00 Total **ALL FEES REQUIRED PRIOR TO THE DEADLINE**

Send (non-on-line) payment to:

Jeff Hammer by Tuesday August 20, 2019

Mail to: Hart-Hammer, Inc.

529 Elm Street

West Des Moines, Iowa 50265

Attn: **Jeff Hammer**

Phone - (515) 277-6305

Fax - (515) 277-3069

jhammer@HartHammer.com



Register On-Line:

Registration for this event is required **on-line**. You can sponsor the event, enter all of your teammates and get your mulligans all set up prior to the event. Payment is fast and secure using PayPal (any credit card) or we can accept checks. Please have all payments in for the event no later than the registration deadline or your spot may be given to someone else.

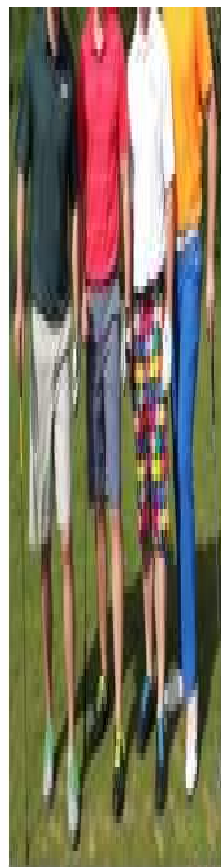
PLUS

- \$5 Mulligans - Limit 4 per player
- Dinner will follow immediately after golf
- Soft spikes are required on this course
- **Cash Bar the entire event**
- 1st Place Individual Trophies
- 1st Place Traveling Trophy
- Pin Events
 - Closest to The Pin
 - Longest Drive
 - Longest Putt
- Challenge Hole
 - \$5/try/player - get **one** raffle ticket
 - Make it on the green - get **three** more
 - Make it in the circle - get **five** more
- Door Prizes - **Don't Forget to Sponsor**

DRESS CODE - See reverse



www.ashraelowa.org



"Nice" is often the opinion of the wearer...



www.ashraelowa.org

YEA Outing

The YEA committee put on another great event on Wednesday, September 11th at Fairmeadows Park in West Des Moines. People enjoyed tailgating, yard games, and sand volleyball. Big thanks to the YEA chairs, Heidi Meyer and AG Oviatt for organizing the events. Be on the lookout for the next event. Flyer for the last event:

IOWA STATE VS IOWA!

RIVALRY WEEK!

Wednesday, September 11th | 5:30-7:30pm



WHEN
Wednesday, September 11th from
5:30 - 7:30pm

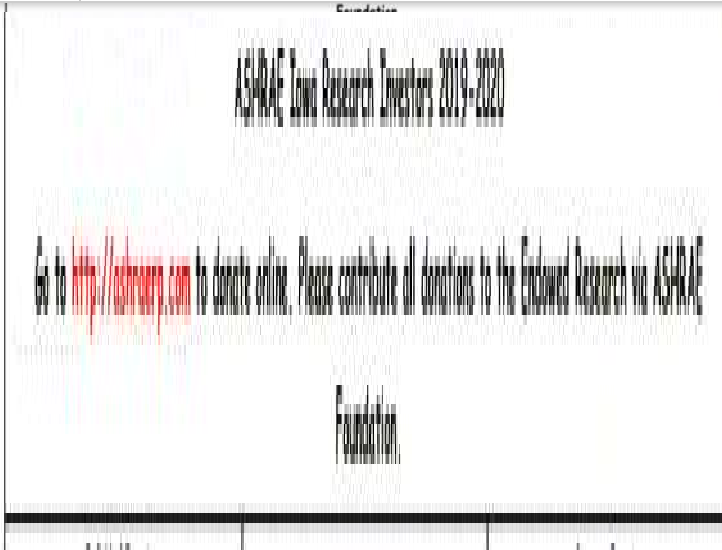
WHERE
Fairmeadows Park
543 22nd Street
West Des Moines, IA 50265

WHAT
We will enjoy tailgating, yard
games, sand volleyball and food
and drinks! Bring a friend, lawn
chairs, and your team colors!



Research Promotion

Please consider donating to Research Promotion (RP). With the new year, we have a new goal. Any donation is helpful and appreciated. This year the Honor Roll levels are set at \$150 minimum for individuals and \$500 minimum for company investors. If you have any specific questions about how your donated money will be used, [please contact Tjaden Ahrens](#).



This year, the BOG is encouraging you to donate online in an effort to save paper and increase the efficiency of the RP donation process. Please visit the ASHRAE RP Donation page [here](#). ASHRAE provides options for you to determine where to place your donation. The Iowa Chapter is looking to increase its endowment and would appreciate it if you would place your donation in the box available next to "Endowed Research via ASHRAE Foundation", check the box indicated that you understand that those funds are restricted for the support of ASHRAE Research, and put "Iowa Chapter" in the "Existing Fund Name (if known):" box. From there it's as simple as any other online purchase with a credit card.

Don't forget that ASHRAE is a 501(c)(3) organization. Contributions are deductible as allowed by law. A receipt will be sent to the address listed above.

If you would still prefer to donate by check or have any further questions about the donation process, [please contact Tjaden Ahrens](#).

Thank you for your donation!

ASHRAE Society News

Industry News

[Winners Announced for HVAC Design, Community Design Competitions](#)

Take your pick: calculate and select HVAC systems for a small hospital in Hungary using Integrated Sustainable Building Design or design a self-sustaining community in Puerto Rico. These were the premises of this year's Student Design Competition and Applied Engineering Challenge and the Setty Family Foundation Applied Engineering Challenge. The competitions' winners were recently announced. The projects will be recognized during the 2020 ASHRAE Winter Conference. [Read more](#)

[33 Students Awarded \\$166,000 in Scholarships](#)

From Kansas State University to Clemson University to Technological and Higher Education Institute of Hong Kong to the University of Victoria, 33 students are working toward solving some of the world's greatest HVAC&R challenges, thanks to ASHRAE's Society scholarships. For the 2019-2020 academic year, 33 students are receiving scholarships that total \$166,000. [Read more](#)

[ASHRAE Partners With Engineers Without Borders USA on Refrigeration Challenge](#)

ASHRAE has partnered with Engineers Without Borders USA on its Chill Challenge competition. The competition will provide up to 10 grants for the development of proof of concept prototypes for low-cost refrigerators and

[No Cranes Needed to Create Concrete Walls](#)

There is a new way to move heavy concrete slabs—with nothing more than human hands. A set of interlocking concrete puzzle pieces can be assembled into a solid wall and staircase in about 15 minutes. [Read more](#)

[Impact of Water Utility Rates on Chiller Selection](#)

By Judith M. Peters, P.E., BEMP, Associate Member ASHRAE

Historically, a water-cooled chiller plant would deliver lower utility costs than a similar air-cooled chiller plant. This article discusses a study that compared the utility expense of operating an air-cooled chiller plant versus a water-cooled chiller plant across eight climatic zones as identified in ASHRAE/IES Standard 90.1-2016. The focus is on utility costs to the owner and the role of energy modeling in making the best possible selection. [Read More](#)

[Sensing Occupant Comfort in the Workplace](#)

Researchers at Deakin University in Australia have developed a small box of sensors that tracks temperature, humidity, air quality, light intensity and light temperature and sound levels. The devices sit on top of office desks and collect data in real time, which building managers use to gain feedback about comfort levels. The Cube Comfort Monitor device is intended to improve the management of building resources, particularly energy systems, by making it easier to identify areas in the office where comfort levels are less than ideal. [Read more](#)

ASHRAE Learning Opportunities

2019 Building Performance Analysis Conference

www.ashrae.org/BuildPerform2019

September 25-27 · Denver, Colorado

Unleash your innovative design and modeling skills, collaborate with project team members and showcase your building design to conference attendees!

[Sign up NOW for the 5th Annual LowDown Showdown that will take place at the 2019 ASHRAE Building Performance Conference September 25 – 27th in Denver, Colorado.](#)

Here's your chance to join an integrated team that will compete for fun and prizes in the annual LowDown Showdown modeling competition. This year's 2019 Building Analysis Conference (BPAC) will center on the integration of building science into the design process. Innovation in modeling and analysis will be a driving force in defining high performance buildings of the future!

In that spirit, the 2019 LowDown Showdown model building will not only challenge participants to achieve "near net zero" but also to include design and modeling elements to create a resilient building capable of withstanding natural disasters and providing prolonged emergency operations.

And the **2019 model building** is a:

90,000 sf town hall (new construction) located in San Diego, California

The facility will be a multi-functional building, housing many of the cities vital public services including being an Emergency Operations Center in times of disaster or crisis.

Bring your creative ideas and analytic thinking to the table as you design a new town hall for San Diego, California.

Overview

The goal of the 2019 LDSd competition is to engage participants in a collaborative and fun learning experience that explores new advances in building science, modeling and technology. Teams are comprised of building analysts, designers, architects, engineers and other participants. Teams will be responsible for creating the architectural design and a performance analysis model based on model building data. The teams may use any software or a combination of software to complete their projects.

Each team will create and submit a poster of their building design, complete the performance analysis model and results spreadsheet and write a one-page narrative on project workflow. Teams will present their projects at the

Presentation.

Sign up now and be assigned to a team OR sign up with your friends and colleagues and create your own team.

The deadline to sign up to participate in the 2019 LowDown Showdown is April 1, 2019.

	<p>Advance your Career with ASHRAE Certifications</p>
	<p>ASHRAE offers 7 certification programs that demonstrates a design professional’s knowledge and skills in a practice area. The certifications allow you to standout to potential clients and enhance your reputation.</p>
<p>Certifications offered:</p> <ul style="list-style-type: none"> Certified HVAC Designer (CHD) High-Performance Building Design Professional (HBDP) Building Energy Modeling Professional (BEMP) Building Commissioning Professional (BCxP) Healthcare Facility Design Professional (HFDP) Building Energy Assessment Professional (BEAP) Operations & Performance Management Professional (OPMP) 	
<p>Learn more at: https://www.ashrae.org/professional-development/ashrae-certification</p>	

Newsletter Sponsors




CONTROL INSTALLATIONS OF IOWA, INC.
 6200 Thornton Ave. Suite 190
 Des Moines Iowa 50321
 515.558.9300 Fax 515.558.9301



HART - HAMMER, INC.
 Phone (515) 277-6305
 Fax (515) 277-3069
 529 Elm St • PO Box 65517
 West Des Moines, IA 50265
www.harthammer.com
info@harthammer.com





3307 104th Street • Des Moines, Iowa 50322
www.hydroneenergy.com

RICK KAPUSTKA **BRET WAGONER**
 515.250.7120 515.250.6090
rick@hydroneenergy.com bret@hydroneenergy.com



FTC
 FLUID TECHNOLOGY CORPORATION



INNOVATIVE HVAC SOLUTIONS
 1454 30th Street, Suite #207 Ph 515-223-6948
 West Des Moines IA 50266 Fax 515-223-7268
info@milltechvac.com
www.milltechvac.com



DPT
 MECHANICAL

J. Craig Miller
 PRESIDENT
 EMAIL - cmiller@nmsinc.com
 Office 515.243.4287 • cell 515.249.1859 • fax 515.243.7313
 SPECIALISTS IN MEASUREMENT & CONTROL EQUIPMENT FOR INDUSTRY SINCE 1952

www.products-inc.com
 1429 2nd Ave
 Des Moines, IA 50314
 PHONE (515)288-5838
 (800)466-5738
 FAX (515)288-2574

Rist & Associates
 MANUFACTURERS REPRESENTATIVES
PRICE **EBTRON** **COOK** **POTTORFF** **DUCTSOX**
 Phone: (515) 243-8720
 FAX: (515) 243-8714
 www.ristandassociates.com
 4 Washington Ave.
 P.O. Box 1807
 Des Moines, Iowa 50305

SYSTEMS
SMB MANAGEMENT & BALANCING, INC. **AABC**
 - HVAC System Test and Balance - Air & Water Balancing -
 HVAC System Commissioning
 925 S.E. Olson Drive Phone 515-987-2825
 Waukee, IA 50263 Fax 515-987-5036
 www.hvactab.com
 James E. Hall, P.E. Matt Jesson
 jimh@hvactab.com mattj@hvactab.com

SETPOINT
 MECHANICAL SOLUTIONS

SYS-KOOL

VHF
 SALES INC.
 (VEST - FELD - HAZER)

WOODMAN CONTROLS
 515-984-0904
 www.woodmaninc.com
 in f t
 We are hiring!
25TH ANNIVERSARY
WOODMAN
 Iowa's Intelligent Building Solutions Since 1991

HILDRETH
 Boiler Company

IMEG

MACK
MCCLAIN
ASSOCIATES

BREWER
 ENGINEERING
 CONSULTANTS, PLC


Central Sales Inc.

Sponsoring our monthly newsletter is a great way to advertise your business and support your Iowa ASHRAE Chapter. Please consider sponsoring for the 2019-2020 society year. Renewing and new sponsors need to send in payment immediately for inclusion in next month's newsletter. Please make checks payable to: ASHRAE Iowa. The cost is \$125.

Send payment to:
 Tyson Scheidecker
 ASHRAE Newsletter Sponsorship
 P.O. Box 3686
 Urbandale, IA 50323

Michael Gustafson is collecting cards for the sponsors. If you've paid and don't see your card here or would like to revise the card shown, send a card-sized PNG or JPEG file to: gustafsonm@thebakergroup.com.



Pictured, left to right: Paris Hilton cardboard cutout, Dan Zaug

Copyright © 2019 ASHRAE Iowa, All rights reserved.

Want to change how you receive these emails?
You can [update your preferences](#) or [unsubscribe from this list](#).

